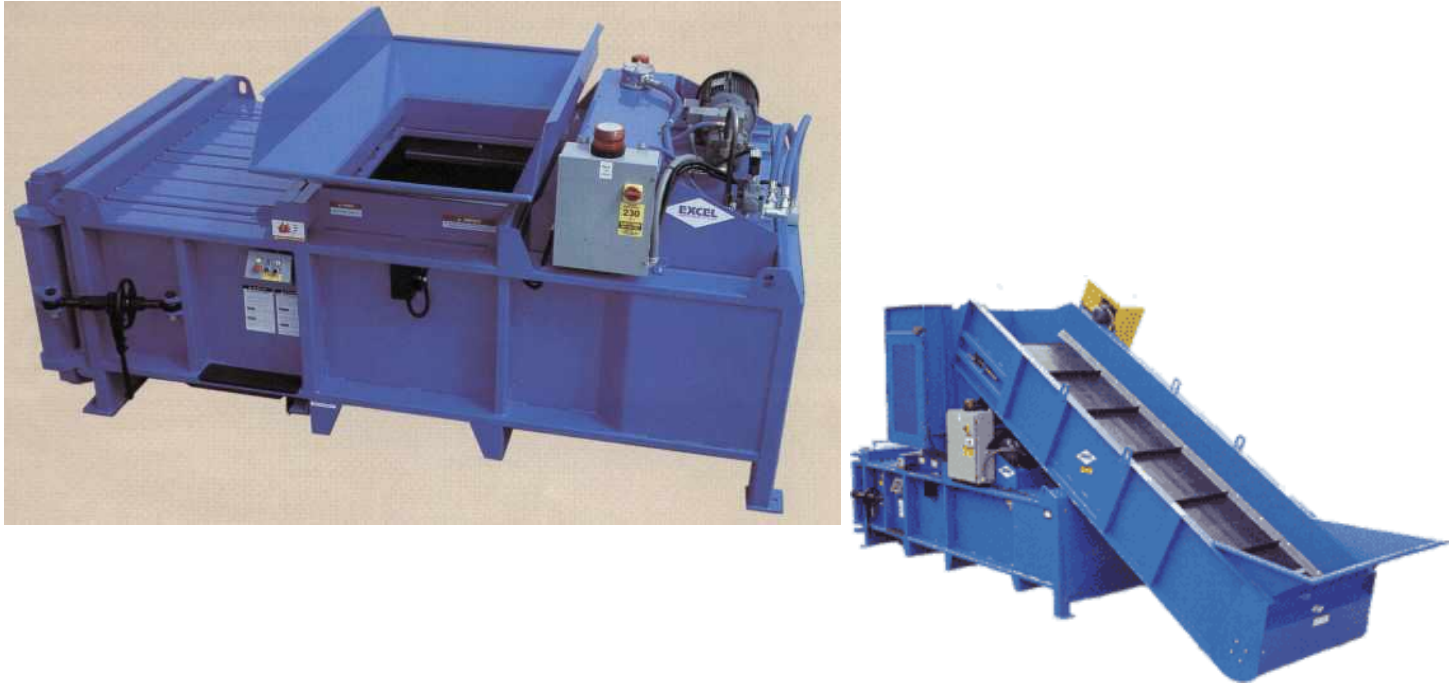




# HIGGINS BALERS LTD

RENEWING, REPAIRING, REPLACING

## EXCEL EX63 CLOSED END BALING PRESS



### SUMMARY SPECIFICATION

DETAILS	IMPERIAL	METRIC
Baler length	14'11"	4550 mm
Baler width	6'4"	1960 mm
Height to top of hopper	5'2"	1575 mm
Hopper size	4'6" x 2'11"	1370 x 889 mm
Machine weight	17000 lbs	7.75 tonnes
Motor size	20 hp	15 kW
Ram thrust	159,400 lbs	72 tonnes
No of hydraulic cylinders		2
Bale size (max)	60" x 30" x 48 "	1524 x 762 x 1219 mm
Bale Weight (approx.)	10 cwt	500kg
Capacity (approximate)	1.5 tons per hour	1.5 tonnes per hour
No of wires		6
Door catch		Hydraulic

MEASUREMENTS MAY VARY DUE TO MANUFACTURER'S POLICY OF IMPROVEMENT  
Images are representative of equipment and not necessarily of the actual item available

